

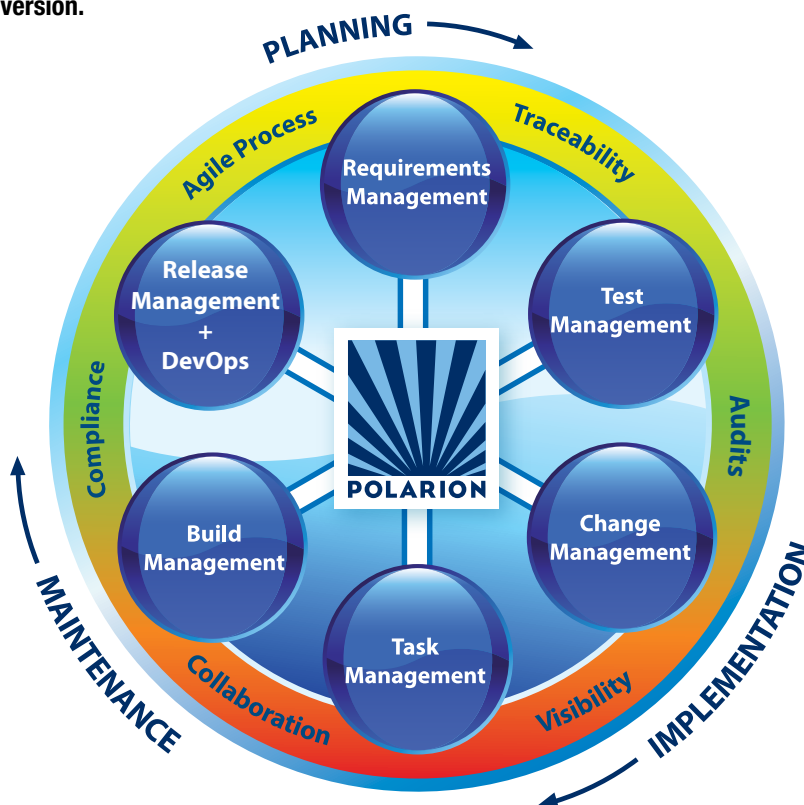


# Polarion<sup>®</sup> ALM<sup>™</sup>

## EVERYTHING YOU NEED IN ONE SINGLE ALM SOLUTION

### PAINLESS APPLICATION LIFECYCLE MANAGEMENT (ALM)

In legacy software development tool environments, many different point solutions are used to manage the application lifecycle. There are requirements management tools, bug trackers, change management, version and configuration management tools, audit and metrics engines, etc. The problem: your development artifacts are scattered, making it difficult to derive useful and timely management information. **Polarion ALM's unique approach unifies the environment**, keeping **all artifacts** of the entire application lifecycle **in one place**. This is accomplished using the industry's most popular open source configuration management system **Subversion**.



POLARION ALM gives organizations tools (for requirements, tasks, change requests, etc.) AND project transparency through **real-time aggregated management information**. This helps managers and developers respond faster and with better quality to new business opportunities and customer demands.

### HIGH PERFORMANCE, SCALABLE, WEB-BASED

**Eliminates inefficiencies** caused by disparate point tools and barriers between silos of data and knowledge. Everything is unified on a single secure platform using the latest web technologies.

### CUT TOTAL COSTS BY 70% OR MORE

Reduce overall costs of ownership associated with System Admin, Implementation, Training, Integrations, Annual Maintenance, Hardware and Infrastructure.

### ADAPTS EASILY TO YOUR ORGANIZATION'S CULTURE

Support and automate **any process or workflow**, from very agile to highly formal, via our totally flexible and open ALM architecture.

### INCREASE YOUR SUCCESS RATE

Wiki collaboration, office document round-trip, rich standard document libraries, market-proven customer extensions... all help you **deliver the right results on time, within budget**.

### POLARION ALM

Web application lifecycle management solution that delivers:

- **Traceability & Versioning**  
Understand the "Who, What, When and Why" of any changes
- **Online Authoring with LiveDocs™**  
Imported documents still look and edit like documents
- **Any Workflow or Methodology**  
Flexible, customizable workflows easily adapt to your methods and norms
- **Resource & Project Planning**  
Spot potential bottlenecks before they occur
- **Collaborate In the Cloud**  
Discussions, wikis, subscriptions, alerts, electronic signatures & more
- **Test Management**  
Specify, manage, and execute Test Cases on a single platform; integrate with popular test automation tools
- **Audits & Qualitative Metrics**  
Manage risk better by catching problems earlier in the lifecycle
- **Automated Build Management**  
Integration with leading tools such as Hudson, Ant & Maven
- **Compliance**  
Attain compliance with a wide spectrum of industry standards: CMMI, SOX, FDA, SPICE, and more.
- **Extensibility**  
API included at no extra charge lets you build your own apps and extensions

### KEY BENEFITS

- 100% Web-based management for all phases of the Application Lifecycle
- Full traceability from initial requirements to test cases to source code
- Supports any process or methodology (Agile, Waterfall, regulatory, hybrid)
- Elevates real-time visibility of project performance and status
- Accelerates adoption, cuts training & IT Admin costs

*Every ALM feature delivered out-of-the-box at an incredibly low price!*

## 2.1 Types of User Accounts and Permissions

1- The system must provide for the following types of user accounts:

ACCOUNT TYPE NAME	PERMISSIONS
Administrator	User can access any component or area of the system including accounts of other users
Librarian	User can access the catalog management features of the system
Patron	User can access the general library features, including browsing, searching, check out, check in, reserve, and purchase
Student	Same as a Patron, except may not access Purchase features

2- The system must provide user management to manage the user role assignments. Each user can have multiple user roles assigned.

3- It must be possible to assign user roles to users.

## 2.2 Administration

4- The system must provide user management to manage the user role assignments. Each user can have multiple user roles assigned.

5- Users must be able to log in to the portal.

6- New users must go through a registration process.

7- Once verified, users must be able to log in to the portal.

## 3 User Requirements

### 3.1 Online User Interface

### 3.2 User Login

## Online Authoring with "LiveDocs"™

Create Search: All and

Scale: 1 day 2 days 1 week Refresh

Assigned to: Benjamin Engle, Jakub Stroleny, Jan Stawarczyk, Jim Banzel

DPP-33885 - Implement: WebServices API for Test Case management

Time Points: 126 2012-02-11

Planned Start: 2012-02-08

Planned End: 2012-02-09

Go to today

Update (Updated: 2012-02-08 17:01)

Edit Save Cancel

DPP-33590

DPP-33885 - Implement: WebServices API for Test Case management

Type: Improvement

Severity: Normal

Author: Benjamin Engle

Project: PolaronSVN

Categories: Test Management

Initial Estimate:

Time Spent:

Remaining Estimate:

Assignee(s): Benjamin Engle

Status: Open

Resolution:

Priority: Medium [50.0]

Due Date:

Time Point: 126 (2012-02-11)

Planning Constraints:

Planned To: 2012-02-08 - 2012-02-09

Description

Custom Fields

## Live Project Planning

# KEY FEATURES:

## REQUIREMENTS MANAGEMENT

Polarion ALM charts new frontiers in state-of-the-art RM. Document-oriented domain experts & others can use familiar Microsoft® Word and Excel® to create and edit requirements. Import them easily to Polarion's exclusive LiveDoc™ web documents, and collaborate online, or offline via our unique Polarion Round-trip™ for Word/Excel.

Other Requirements Management features include:

- Link-role-based traceability matrix and tree views
- Fully customizable multilevel requirements approval process
- Impact analysis and traceability reports

## TESTING

Polarion ALM is not just a testing tool: it's a complete quality management platform designed to reduce cost and improve overall quality. We make it easy to create test cases and map them back to your requirements. Once the test cases are written you can plan both manual and automated test runs (including 3rd-party test automation tools) and report the results to all the stakeholders.

**BEST QUALITY TOOL  
WINNER 2013 & 2012**



## RISK MANAGEMENT

Build-in project templates provide you capabilities to manage potential risks, following the standard Failure Mode and Effect Analysis (FMEA) approaches, or by a custom workflow you create to meet your exact needs.

## LIVE PLANNING

Project schedules are automatically updated as projects progress. Delays and workloads are shown in real-time and you can import/export to Microsoft Project™.

## WORKFLOW-DRIVEN CHANGE MANAGEMENT

Polarion ALM provides workflow-driven change management for all Work Items in the application development process. Out of the box project templates with pre-configured workflow automate your process, ensuring no steps are ever missed or bypassed. Supports Agile/Lean, Traditional, Hybrid, or custom environment: FDD, XP, Scrum, RUP, Kanban, etc.

## COLLABORATION & COMMUNICATION

Web-based platform ensures 24/7 project access for distributed teams anywhere. Live dashboards, reports, and activity stream deliver key info and metrics to stakeholders in real time. Access-controlled threaded commenting for every artifact. Email change alerts. Intelligent online documents, with diagramming tools. Offline collaboration via round-trip for MS Word/Excel.

## EASY TO USE INTERFACE

POLARION ALM is a server-based application. Team members can access the portal over your network or in the cloud from anywhere, anytime, using a web browser, plugins for selected third-party software (Eclipse, VS, others) or mobile apps.

## DEVOPS

DevOps oriented processes and methods help you increase collaboration, reduce production risks, and release your products or services in less time. Sharing information, plans and requirements amongst the team helps them to respond faster to frequent changes. Sharing tools makes it possible to automate repeated cross-team tasks and reduces deployment errors.

## SCM – BASELINING THROUGH ALL ARTIFACTS

Polarion ALM is built atop Subversion, the undisputed SCM leader according to industry analysts. But it goes far beyond source code management. Every artifact - System Requirements Specifications, Verification Procedures, Project Plans and Tasks... simply everything... is stored in version control repositories. And every change to every artifact is tracked. Optional support for electronic signatures ensures compliance with FDA 21 CFR Part 11 and other standards.

## OPEN ARCHITECTURE

An open architecture with APIs lets you extend the unique platform to suit your needs. The Polarion Community (10,000+ members and growing) has already contributed more than 150 extensions for Polarion products. Ready-made plug-ins for popular 3rd-party tools (HP QC, Jira and more) make it easy to set up an integration for internal teams who want to keep, or external teams who use such tools, removing adoption obstacles and ensuring a smooth transition.

## TRACEABILITY

Polarion ALM is designed to ensure that you can always prove what was done, when, why, and by whom: a requirement was approved, a test passed, a defect was found, fixed and re-tested, a release implemented certain requirements. Cross-project semantic linking and workflow controls ensure consistent process. Robust reporting makes it easy to demonstrate compliance with FDA, FAA, CMMI, ISO, IEC, CPI, SPICE, and many more.

## Sprint Board for i33 (2010-12-15 - 2010-12-31)

Release Backlog: Releases/Version\_0

Total of 100 items. 100 not started (0%) 0 in progress (0%) 0 waiting for QA (0%) 0 Items assigned to current user "Project" are highlighted.



### Planned for Version 1.0

User stories assigned to Version 1.0 View the implementation tasks in the Time View.

ID	Status	Title	Severity	Assignee
EL-449	Implemented	3.1.7 Administration	High	
EL-443	Implemented	4.1.2 System Administrator must be able to set the user roles.	High	
EL-121	Accepted	3.3.3 When reading list of books written by some writer, user wants to see what books...	High	
EL-117	Accepted	3.2.2 Summary of the book	High	
EL-139	Accepted	3.2.4 Online services	High	
EL-442	Verified	4.1.1 There are two user roles: basic user and administrator.	High	
EL-438	Implemented	3.1.5 Access the list of favorite books	High	

## Workflow driven collaboration on Wiki

The screenshot shows the Polarion ALM interface. At the top, there's a search bar and a filter for 'targetRelease 3.6.0'. Below that, a table lists tasks with columns for ID, Title, Status, Assignee(s), and Author. The tasks include 'Statistical data for Test Runs', 'Default template for My Polarion page', and 'Implement: Default template for My Polarion page: tuned it a bit myself'. The bottom part of the screenshot shows a detailed view of a task, including its source code and a list of revisions.

## Full traceability from requirements to source code

# WHY IS POLARION ALM TODAY'S BEST VALUE? COMPARE...

Features	Polarion ALM	IBM Rational Team Concert Enterprise	HP ALM	MKS Integrity
Express requirements as text, as drawings/diagrams, or both	✓	✗	✗	✗
Import requirement and test specification documents from MS Word; edit online in a familiar, document-like interface	✓	✗	✗	✗
MS Word and Excel Round-trip: export, then re-import externally changed data	✓	✗	✗	✗
Out-of-box full automation support for most xUnit/ JUnit Test Automation frameworks	✓	✗	✗	✗
Out-of-box support for safety requirements as FMEA	✓	✗	✗	✗
Full traceability to/from business requirement down to source code, managed in any number of SVN or GIT repositories	✓	✗	✗	✗
Time Machine - ability to open and browse full project data as it was in any moment in the history	✓	✗	✗	✗
Fully documented Open API that covers 100% of the functionality.	✓	✗	✗	✗
Based on open standards & frameworks	✓	✗	✗	✗
<b>LIST PRICE</b>		\$4,350	\$18,500 *	\$3,470
<b>1 named user perpetual license including subscription</b>	<b>\$2,988</b>	IBM Rational Team Concert Developer Authorized User Single Install License + SW Subscription & Support 12 Months	* HP ALM Global 5-Users pack: \$92,500	

## INDUSTRY BUZZ

“ Tomorrow's ALM is a platform for the coordination and management of development activities, not a collection of lifecycle tools with locked-in and limited ALM features. These platforms are the result of purposeful design rather than rework following acquisitions. ”

Forrester Research:  
The Changing Face Of Application Lifecycle Management

“ We are using Polarion for Requirement, Project and Change Management processes and achieved significant improvements at the development of embedded system solutions. ”

Werner Brugger,  
Director R&D Design Center Ulm, Atmel Automotive

“ The flexibility to define your software development process and the possibility to customize Polarion to your needs is actually unreached in the market of ALM tools. ”

Guido Majewski, T-Systems International GmbH

“ Polarion turned out to be the ideal tool to address the ALM needs of a midsize company like ours while being affordable compared to the competition. Also, the challenges in our industry with needs for ISO9001, Spice and CMMI process models are ideally supported by Polarion. ”

Norman Rother, Technisat Digital

“ We had first looked for a tool just to handle bug tracking and change management in an efficient way, being prepared for a SPICE maturity level of 3. Polarion was the right tool providing the required functionality. Additionally, we appreciated the open interfaces and the various possibilities for customizations and extensions. ”

S.Schreiber, Manager Electronics at ASK Industries

“ Due to its openness and adaptability, Polarion ALM is very flexible in terms of use cases and artifacts. A requirements engineering process far beyond software development can be supported, e.g. RE in product processes for mechatronics. ”

Andreas Edler, InMediasP

Polarion® Software solutions with over  
**1 MILLION USERS WORLD-WIDE**  
manage many kinds of projects in a broad range of industries.

**BOMBARDIER**

**NORTHROP GRUMMAN**

...T...**Systems**...

**OLYMPUS**  
FOCUS ON LIFE



**MAQUET**  
GETINGE GROUP

**swisslog**

**KRONE**

**LIEBHERR**

**paragon**

**AWD**

**PHONAK**  
hearing systems

**SANDVIK**

**PHOENIX CONTACT**

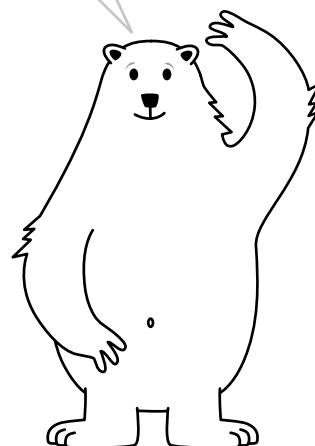
**LOEWE.**

**Sony DADC**

**Boehringer Ingelheim**

**SIEMENS**

**MTU**  
Aero Engines



**Europe, Middle-East, Africa: Polarion Software GmbH**  
Hedelfinger Straße 60 — 70327 Stuttgart, GERMANY  
Tel +49 711 489 9969 - 0  
Fax +49 711 489 9969 - 20  
www.polarion.com - info@polarion.com



**Americas & Asia-Pacific: Polarion Software, Inc.**  
100 Pine Street, Suite 1250, San Francisco, CA 94111, USA  
Tel +1 877 572 4005 (Toll free)  
Fax +1 510 814 9983  
www.polarion.com - info@polarion.com